

Southwest Virginia Angus

# DOUBLE HEADER!

**Saturday • April 20th, 2024 • Noon**

***SALE SITE***

***Washington County Fairgrounds • Abingdon, VA***

---

**To All Beef Producers**

**DEAR FRIENDS,**

This year we will be selling 50 lots of registered Angus females, which consist of Spring calving pairs, Fall calving pairs, bred heifers and open heifers. There is something for everyone, no matter what time of year your personal preference is for calving.

The twenty-sixth annual version of the Southwest Virginia Angus Performance Tested Spring Bull sale follows the females. They were all fed as a group at G&E Farm in Gretna, VA. They were weighed off test on 3/8/24 and evaluated by a VDACS State Grader. This is a top-notch set of bulls; they averaged 3.80 gain on test and their average 365 day adjusted weight is 1161 lbs. All of the bulls qualified under the Virginia Quality Assurance program and are designated with a VQA symbol underneath the EPDs. Negative BVD PI test at delivery on all bulls. *Look for additional information on the bulls on page 35.*

The sale starts at 12 noon with the females selling first. You are welcome to come by on Friday, April 19th in the afternoon or on Saturday morning prior to the sale to evaluate the cattle being offered for sale. All animals selling in this sale either have no carrier ancestry or have tested AM, CA and/or NH free. We are also on the web at [swvaangus.org](http://swvaangus.org).


I encourage you to study the pedigrees and performance information on these cattle. Many selling are sired by some of the most proven bulls available in the breed. The consignors of these cattle offered in this sale have been in business for a number of years. They are offering some of their best genetics from which you may select. The EPD's and pedigrees, along with individual performance, will assist you in making your selections.

As with our previous sales, if you do not feel comfortable attending in person, we would like to remind you that the sale will also be streamed live on **Cowbuyer.com** where your bids will be received in real time. If you prefer to bid by phone, please contact either Smith Reasor or myself **before sale day** and we will provide you with a number you can call to place your bids that day.

We look forward to seeing you on Saturday, April 20th. Please feel free to contact any of the consignors or the sale coordinator, George T. Johnstone Jr. at 276-620-4901, or the sale auctioneer, Smith Reasor at 276-620-3123.

Southwest Virginia Angus Association hereby reserves the right in its absolute and total discretion to refuse to accept any bid from any person or individual or to issue a bid number for any reason, including but not limited to, a previous instance of non-payment in a Southwest Virginia Angus Association sale.

Sincerely,

  
George T. Johnstone Jr.

**ONLINE BIDDING**



**Pre-Registration & Pre-Approval Required**

**Contact Aaron Ray Tompkins  
336.363.4639**

**LIVE INTERNET BIDDING AT  
[www.cowbuyer.com](http://www.cowbuyer.com)**

- View/bid online in Real Time
- **Registration is required.** Please register at least one (1) hour prior to sale time at [www.cowbuyer.com](http://www.cowbuyer.com)
- High Speed Internet is required. Slower speed will not permit you to bid and keep pace in real time.
- Terms: Purchasing online constitutes a legal contract and promise for payment of purchases. All purchases must be paid within ten (10) days of sale date and prior to load out or delivery of cattle purchased.
- Cowbuyer LLC is a service provider and is not responsible for the activity or inactivity of any technology, internet connection at the sale site or connection and technology of the bidders.
- No App required on mobile devices.

**Questions please contact:**

**Aaron Ray Tompkins – 336-363-4639**



## G A R PROGRESS

## 3 MISS PROGRESSOR 15E

G A R PROGRESS

DOB 10/7/17

PROGRESSOR G 33A PROGRESS 27Y

Tatt 15E

ERICA G 27Y MENTOR 19W

Reg. 20009259

JUSTAFEW NEW DESIGN 401

MISS NEW DESIGN 2U10

MISS G A A F 631 2N10

CED	11
BW	-.6
WW	47
YW	81
M	28

## COW

Consignor: **ACE IN THE HOLE FARM**

A granddaughter of G A R Progress out of a dam sired by Justafew New Design 401. She sells pasture exposed to TTT Fireball 26 whose EPDs are +16 -2.7 +71 +128 +30 with a \$B+230 (Top 1% of breed) \$C+339 (Top 2%). Breeding update sale day.

## 1 COOL BREEZE SHORITA 16J

QUAKER HILL RAMPAGE 0A36

DOB 3/21/21

WILLIAMS RAMPAGE 282

Tatt 16J

WILLIAMS RITA 71

Reg. 20786709

PROGRESSOR G 33A PROGRESS 27Y

CED	6
BW	1.3
WW	63
YW	114
M	30

COOL BREEZE SHORITA 16C

COOL BREEZE SHORITA 1606

## COW

Consignor: **ACE IN THE HOLE FARM**

A daughter of the Williams Rampage 282 bull out of the Shorita cow family. Nice, balanced EPDs on this young female. Pasture exposed to TTT Fireball 26, the son of GB Fireball 672 out of a dam sired by SydGen Enhance. Breeding update sale day.

## 4 B G S BLACKCAP 929

S A V BISMARCK 5682

DOB 1/28/22

B G S BISMARCK 862

Tatt 929

B G S RITA 794

Reg. 20745188

JINDRA ACCLAIM

B G S BLACKCAP 882

B G S BLACKCAP 716

CED	3
BW	2.7
WW	73
YW	128
M	27

## COW

Consignor: **B G S ANGUS**

This female's pedigree is loaded with Pathfinders on the top and bottom. She is out of a dam from the Blackcap cow family. 929 has a bull calf born 3/13/24 by Woodhill Goldstrike whose EPDs are: +10 +.2 +75 +136 +35 \$B+170 (Top 20%) \$C+295 (Top 15%).

## 2 MISS ACE IN THE HOLE 15J

QUAKER HILL RAMPAGE 0A36

DOB 3/14/21

WILLIAMS RAMPAGE 282

Tatt 15J

WILLIAMS RITA 71

Reg. 20786708

PROGRESSOR G 33A PROGRESS 27Y

CED	13
BW	-1.2
WW	48
YW	89
M	23

MISS PROGRESSOR 15C

MISS NEW DESIGN 2S10

## COW

Consignor: **ACE IN THE HOLE FARM**

A nice young female with low birth weight EPDs. She is sired by the Randall Williams herd sire, Williams Rampage 282. Sells with a 3/12/24 bull calf sired by TTT Fireball 26 whose EPDs are +16 -2.7 +71 +128 +30 \$B+230 - Top 1% \$C+339 - Top 2% of Angus bulls.



## QUAKER HILL RAMPAGE 0A36



## CONNELY CONFIDENCE PLUS

## 6A BF CONFIDENCE PLUS 342

BF CONFIDENCE 807

DOB 4/21/23

BF CONFIDENCE 023

Tatt 342

BF IDENTITY 428

Reg. 20765399

CONNELY CONFIDENCE PLUS

BF CONFIDENCE PLUS

BF TEN X 744

CED	10
BW	-.5
WW	44
YW	85
M	25

**COW**

**MIP**

Consignor: **BULLOCK FARM**

A nice open heifer from Tom and Vanessa Bullock. A granddaughter of the popular Connealy Confidence Plus. Her granddam is a daughter of Breed Legend, A A R Ten X 7008 S A. Sells open.

## 5A B B F TRANSCENDENT K419

G A R MOMENTUM

DOB 3/7/22

G A R TRANSCENDENT

Tatt K419

G A R PROPHET 2685

Reg. 20912387

A A R TEN X 7008 S A

CED	10
BW	1.2
WW	65
YW	112
M	27

VPI SAVANNAH 4B19

VPI SAVANNAH 0X33

**COW**

## 6B BFCONFADENCE PLUS 334

BF CONFIDENCE 807

DOB 3/30/23

BF CONFIDENCE 023

Tatt 334

BF IDENTITY 428

Reg. 20765398

44 ENVISION

BF ENVISION 914

BF IDENTITY 429

CED	13
BW	-1.7
WW	40
YW	75
M	27

**COW**

**MIP**

Consignor: **BULLOCK FARM**

A daughter of the herd sire at Bullock Farm, B F Confidence 023 out of a dam sired by 44 Envision, the A A R Ten X 7008 S A son. A thirteen month old open heifer that should make a cow.

## 5B B B F DUAL THREAT K356

G A R SURE FIRE

DOB 2/28/22

G A R DUAL THREAT

Tatt K356

G A R DAYBREAK A3010

Reg. 20912348

EATHINGTON SUB-ZERO

CED	11
BW	-.5
WW	55
YW	106
M	32

SILVERADO MISS QUEEN 6356

SILVERADO QUEEN 5111

**COW**



## G A R DUAL THREAT

Consignor: **BEE BRANCH ANGUS**

K356 is a balanced trait first calf heifer. She is sired by the calving ease, high marbling, and proven sire GAR Dual Threat. This is a moderate framed bred heifer that will be a nice addition to any program. She was pasture exposed to the stout KCF Bennett Wildcat 502. This is a son of the popular E & B Wildcat 9402. She has been confirmed safe in calf and will be due 11/2/24.



## BYERGO BLACK MAGIC 3348

## 8 DMB BLACKBIRD 121

BYERGO BLACK MAGIC 3348

DOB 2/2/21

DMB BLACK MAGIC 519

Tatt 121

ROCK RIDGE BLOSSOM 2060

Reg. 20047156

WERNER INSIGHT 7218

DMB BLACKBIRD 229

CED	-3
BW	3.5
WW	75
YW	127
M	15

DMB BLACKBIRD 727

## COW

Consignor: **DMB ANGUS**

A nice three year old daughter of the DMB Black Magic bull that goes back through the very productive Blackbird cow family for us. She had a weaning ratio of 105 on her first calf. She sells pasture exposed to DMB Iconic 712 whose EPDs are +1 +1.4 +92 +160 +31 \$W+88 (Top 1%) \$G+84 (Top 10%) \$B+195 (Top 10%) \$C+321 (Top 5%).

## 7 DAWSON FARMS CHARLOTTE 2112

SYDGEN EXCEED 3223

DOB 8/30/21

SYDGEN ENHANCE

Tatt 2112

SYDGEN RITA 2618

Reg. 20130860

MCC ALL PURPOSE 7027

P/CC 960 CHARLOTTE OF 468

CED	8
BW	-.1
WW	70
YW	123
M	31

J/ 468 CHARLOTTE OF 419

## COW

Consignor: **DAWSON FARMS**

Charlotte is an Enhance daughter, descending from the Supermama family on her dam's side. She is a calving ease, super docile young cow with outstanding EPDs. She is bred to BAR Dynamic for a 9/7/2024 bull calf. She has a heifer calf at her side, Dawson Farms Charlotte 2322 (Lot 7A).

## 9 DMB TREASURE 8100

S WHITLOCK 179

DOB 10/19/20

WERNER WHITLOCK 7120

Tatt 8100

WERNER LADY JAYE 0176

Reg. 19890981

WHITESTONE INTUITION C106

DMB TREASURE 696

CED	6
BW	1.9
WW	65
YW	124
M	36

GARRISON TREASURE 1166

## COW

Consignor: **DMB ANGUS**

A young three year old cow out of the Werner Whitlock son. The Whitlock daughters have made very good cows for us. She sells with a heifer calf at side born 12/26/23, sired by DMB Treasure 3109. Calf DMB Treasure 2123 (Reg #20856054). Breeding information available on sale day.

## 7A DAWSON FARMS CHARLOTTE 2322

44 RADICAL GROWTH 6603

DOB 9/23/23

P/CC RADICAL GROWTH 760

Tatt 2322

P/CC 76 LADY OF 968

Reg. 20796266

SYDGEN ENHANCE

CED	8
BW	.3
WW	76
YW	133
M	27

DAWSON FARMS CHARLOTTE 2112

P/CC 960 CHARLOTTE OF 468

## COW

Consignor: **DAWSON FARMS**

Dawson Farms Charlotte 2322, sired by P/CC Radical Growth 760, actual birth weight 51 lbs. A future calving ease prospect with EPDs that mirror her dam's.



## SYDGEN ENHANCE

# 10 DMB BLACKBIRD 239

PVF INSIGHT 0129  
WERNER INSIGHT 7218

DOB 3/26/19  
 Tatt 239  
 Reg. 19403578

WERNER LADY 919  
WHITESTONE INTUITION C106

CED	2
BW	.8
WW	71
YW	121
M	26

DMB BLACKBIRD 1216

DMB MS BLACKBIRD 229

## COW

Consignor: **DMB ANGUS**

A very easy keeping, deep bodied cow whose Granddam was one of the best production cows we have ever had. She reads with a solid set of EPD's and sells pasture exposed to DMB Iconic 712 whose EPDs are +1 +1.4 +92 +160 +31 \$W+88 (Top 1%) \$G+84 (Top 10%) \$B+195 (Top 10%) \$C+321 (Top 5%).



## S A V JESSE JAMES 0968

# 11 DMB FOREVER LADY 327

EXAR UPSHOT 0562B  
ROCK RIDGE UPSHOT B99

DOB 2/4/17  
 Tatt 327  
 Reg. 18747237

ROCK RIDGE BLOSSOM 2060  
TWIN VALLEY PRECISION E161

CED	0
BW	2.4
WW	59
YW	107
M	21

MGSA FOREVER LADY 6010

TWIN HILLS FOREVER LADY 2104

## COW

Consignor: **DMB ANGUS**

A mature cow out of the Legendary Forever Lady cow family. She has done everything you can ask for from a mature brood cow. Easy keeping and breeds back. Her calving interval on 5 calves is 367 days and she always weans a good calf. She sells with a heifer calf at side sired by DMB Iconic 712 born on 2/21/24 weighing 76 pounds.

# 12A GRAGG EVERELDA ENTENSE 2100

S A V RENOWN 3439  
GRAGG RENOWN 7138G

DOB 3/17/22  
 Tatt 2100  
 Reg. 20914186

GRAGG ELSIEMERE 4117  
SITZ UPWARD 307R

GRAGG EVERELDA ENTENSE 7012

COLEMAN EVERELDA ENTENSE0243

CED	2
BW	4.1
WW	74
YW	134
M	29

## COW

MIP

Consignor: **GRAGG FARMS**

This female traces back to a cow we bought from Coleman Angus. Her WR is 104 and YR is 111. Her dam carries WR 4 @ 103, YR 3 @ 108. She was exposed to LAWSONS Stunner J884 (#20143294) and Gragg Pathfinder 2136G (#20690279) from December 6, 2023, to March 20, 2024. She was pregnancy checked via ultrasound with calf on March 20, 2024. The Stunner son stems from a daughter of Lawsons Chloe C815.

# 12B GRAGG BARBARA PERFECTION2063

S A V RENOVATION 6822  
S A V JESSE JAMES 0968

DOB 2/20/22  
 Tatt 2063  
 Reg. 20618835

S A V BLACKCAP MAY 8961  
V D A R REALLY WINDY 4097

GRAGG BARBARAPERFECTION 4055

BLUQ BARBARA X38

CED	10
BW	.6
WW	60
YW	102
M	20

## COW

Consignor: **GRAGG FARMS**

A Jesse James daughter that has a WR of 108 with a YR of 107. Her 10-year-old dam is still in our herd with WR 8 @ 103, YR 5 @ 106. We did not AI any of our fall animals this past year, so all females are naturally covered. The two sires for these females have been DNA tested and are on file with the AAA. She was exposed to LAWSONS Stunner J884 (#20143294) and Gragg Pathfinder 2136G (#20690279) from December 6, 2023, to March 20, 2024. She was pregnancy checked via ultrasound with calf on March 20, 2024.



## EXAR UPSHOT 0562B



**15A** HCA MISS WALL STREET 067-314

DEER VALLEY WALL STREET

DOB 4/1/23

Tatt 314

Reg. 20677115

CED	5
BW	2.0
WW	75
YW	130
M	28

LUCAS WALL STREET T067N

LUCAS LADY QUALITY T2840

S WHITLOCK 179

LUCAS LADY WHITLOCK 713J

LUCAS LADY 004 6300

**COW**

**MIP**

Consignor: **HILLCREST ANGUS**

Out of a Whitlock daughter, this Wall Street heifer is a tank, big hipped and deep flanked. These three half-sisters can go right to the front pasture.



**DEER VALLEY WALL STREET**

**15B** HCA MISS WALL STREET 067-313

DEER VALLEY WALL STREET

DOB 2/23/23

Tatt 313

Reg. 20601401

CED	4
BW	2.7
WW	79
YW	141
M	26

LUCAS WALL STREET T067N

LUCAS LADY QUALITY T2840

V A R DISCOVERY 2240

WDB MS BURG DISC 1516 1819

WDB MISS FINAL ANS 751 1516

**COW**

**MIP**

Consignor: **HILLCREST ANGUS**

Another larger framed Wall Street heifer with a big body and beautiful profile. Her YW of 141 is top 10% for the breed.

**16** GVF RITA 7053

SITZ UPWARD 307R

DOB 2/5/17

Tatt 7053

Reg. 18782496

PLATTEMERE WEIGH UP K360

BARBARA OF PLATTEMERE 337

SYDGEN C C & 7

BEECH GROVE CC & 7 1019

RAY RITA 6097

CED	8
BW	1.1
WW	66
YW	119
M	31

**COW**

Consignor: **HILLCREST ANGUS**

This highly productive daughter of Plattermere Weigh Up has two top sons working in local herds. She sells bred to Lucas Wall Street 067 for an early summer calf.

**15C** HCA MISS WALL STREET 067-308

DEER VALLEY WALL STREET

DOB 1/28/23

Tatt 308

Reg. 20601396

CED	6
BW	2.5
WW	73
YW	124
M	25

LUCAS WALL STREET T067N

LUCAS LADY QUALITY T2840

RTF TEN X OF 037 3615

RTF MISS BLACKCAP 5970

DEER VALLEY BLACKCAP 78136

**COW**

**MIP**

Consignor: **HILLCREST ANGUS**

A big, high performing daughter of our Wall Street son from a Ten X bred dam. EPDs have plenty of growth, and she has backed it up in the field.

**17** LUCAS LADY TOUR OF DUTY 617F

WERNER WAR PARTY 2417

DOB 2/2/16

Tatt 617F

Reg. 18452913

R B TOUR OF DUTY 177

B A LADY 6807 305

K C F BENNETT QUALITY W445

LUCAS LADY QUALITY 299N

LUCAS LADY PENDLETON 04J

CED	8
BW	1.8
WW	71
YW	125
M	41

**COW**

**MIP**

Consignor: **HILLCREST ANGUS**

A beautiful big daughter of Tour of Duty that boasts 41 milk, with plenty of length and frame. She has two daughters working in our herd and sells bred heavy to Lucas Wall Street 067.





**S S NIAGARA Z29**

**19 KAF MISS BLACKCAP 003**

HOOVER DAM

DOB 1/4/20

S S NIAGARA Z29

Tatt 003

JET S S X144

Reg. 19944818

V A R DISCOVERY 2240

POWELL BLACKCAP 6303

CED	5
BW	.8
WW	66
YW	119
M	29

QUAKER HILL BLACKCAP 0A31

**COW**

Consignor: **KING ANGUS FARM**

Just a four year old female consigned by King Angus Farm. Her pedigree is loaded with Pathfinder bulls on the top and bottom side. Her dam is from the Blackcap cow family. Sells with a heifer calf born 11/7/23 sired by Jindra Acclaim whose EPDs are +4 +1.2 +69 +138 +30 \$F+140 (Top 1%) \$B+203 (Top 3%) \$C+288 (Top 20%).

**18A JUSTAFEW BLK PERL BONNIE 213**

SYDGEN TRUST 6228

DOB 9/20/22

SYDGEN BLACK PEARL 2006

Tatt 213

SYDGEN ANITA 8611

Reg. 20668276

MEAD MAGNITUDE

JUSTAFEW MAGNETIC BONNIE 005

CED	13
BW	-.4
WW	57
YW	103
M	32

JUSTAFEW PENDLTN BONNIE 001

**COW**

Consignor: **JUSTAFEW ANGUS**

Nice pair of Black Pearl of the ABS Stud bred heifers. Black Pearl daughters excel in fertility, fleshing ability, milk production, and maternal instinct. Sells due to calve 9/15/24 to B A R Dynamic from ABS. He boasts EPDs of CED +15, BW -3.7, WW +84, YW +149, Milk +27. Examined safe.

**20 WDB MISS BURGESS112 131 1725**

A A R LEUPOLD 0578

DOB 10/1/17

GDAR LEUPOLD 298

Tatt 1725

GDAR MISS BLACKCAP 9232

Reg. 19135012

G V F FOREWARD 8177

WDB MISS 8177 122 131

CED	7
BW	1.2
WW	64
YW	106
M	26

W D B 7234 FOCUS 112

**COW**

Consignor: **KING ANGUS FARM**

Balanced EPDs on this GDAR Leupold 298 daughter. Sells with a heifer calf born 2/24/24 sired by GVF Caliber whose EPDs are +7 +2.7 +77 +137 +36 \$B+164 \$C+281.

**18B JUSTAFEW BLACK PERL MISS 205**

SYDGEN TRUST 6228

DOB 9/3/22

SYDGEN BLACK PEARL 2006

Tatt 205

SYDGEN ANITA 8611

Reg. 20668280

HA PROGRAM 5652

CED	12
BW	-.2
WW	46
YW	90
M	31

JUSTAFEW PROGRAM MISS 411

JUSTAFEW TARGETED MISS 901

**COW**

Consignor: **JUSTAFEW ANGUS**

Black Pearl daughter from a good old cow that weaned six calves with a ratio of 101 and two yearlings with a ratio of 105. Sells due to calve 9/5/24 to Mead Magnitude from the ABS Stud who boasts EPDs of CED +13, BW -.5, WW +82, YW +154, Milk +39. Examined safe.



**SYDGEN BLACK PEARL 2006**

**21A** **LAWSONS ELBA L1277**

MUSGRAVE 316 STUNNER  
T K STUNNER F655B  
T K PRINCESS Z749  
ZWT SUMMITT 6507  
LAWSONS ELBA H711  
SIEBRING ELBA 808

DOB 3/28/23  
 Tatt L1277  
 Reg. 20643421

CED	1
BW	4.7
WW	88
YW	144
M	25

**COW**

Consignor: **LAWSON FAMILY FARMS**

Sells open and ready to breed. She has an individual 205-day ww of 632#. Pedigree is loaded with some of the great cows and sires in the breed. The Summitt sired calves make as good daughters as there are in the breed. Outstanding growth EPDs on these open heifers. A great investment.



**MUSGRAVE 316 STUNNER**

**21B** **LAWSONS LUCY L1274**

MUSGRAVE 316 STUNNER  
T K STUNNER F655B  
T K PRINCESS Z749  
EXAR EQUITY 7435B  
LAWSONS LUCY H750  
BASIN LUCY 6T35

DOB 3/15/23  
 Tatt L1274  
 Reg. 20767973

CED	2
BW	4.2
WW	105
YW	175
M	25

**COW**

**DDP**

Consignor: **LAWSON FAMILY FARMS**

Sells open and ready to breed. Nice heifer goes back to the Basin Lucy cow family. She has a 639 205-day WW and a 107 Ratio. The 6T35 was a top notch producer in our herd. She will make a great investment (Top 1% WW and YW).

**22A** **LAWSONS WITCH K1100**

MUSGRAVE 316 STUNNER  
T K STUNNER F655B  
T K PRINCESS Z749  
ZWT SUMMITT 6507  
LAWSONS WITCH G586  
LAWSONS WITCH Z321

DOB 9/4/22  
 Tatt K1100  
 Reg. 20626891

CED	12
BW	.6
WW	76
YW	131
M	27

**COW**

Consignor: **LAWSON FAMILY FARMS**

Selling a super nice pair of full sisters in blood. K1100 is safe in calf for a 9/15/24 calf to Koupals B&B Everest 2034 whose EPDs are +15 -1.1 +67 +119 +32. K1100 is carrying a heifer calf progeny. These heifers will make super females and the calves, I promise, will be impressive!

**21C** **LAWSONS PLEASANT PRIDE L1273**

T K STUNNER F655B  
LAWSONS TOP SHELF J888  
LAWSONS CHLOE Z341  
BAR R JET BLACK 5063  
BRIDGEVIEW PLEASANTPRIDE1962  
BRIDGEVIEW PLEASANT PRIDE 137

DOB 3/15/23  
 Tatt L1273  
 Reg. 20767954

CED	-4
BW	4.2
WW	96
YW	166
M	31

**COW**

Consignor: **LAWSON FAMILY FARMS**

She sells open and ready to breed. We purchased 1962 a few years ago as a feature at Bridge View Farm in Kentucky from a longtime Pleasant Pride cow family. Outstanding EPDs on this open heifer.

**22B** **LAWSONS WITCH K1099**

MUSGRAVE 316 STUNNER  
T K STUNNER F655B  
T K PRINCESS Z749  
ZWT SUMMITT 6507  
LAWSONS WITCH G587  
LAWSONS WITCH Z321

DOB 9/1/22  
 Tatt K1099  
 Reg. 20626893

CED	4
BW	3.4
WW	89
YW	151
M	11

**COW**

Consignor: **LAWSON FAMILY FARMS**

She sells bred to calf to Koupals B&B Everest 2034 due on 9/15/24. This heifer earned an individual ratio of 103 with a 205-day ww of 609#. Outstanding EPDs on this bred heifer.

**23 MATNEY NIAGARA 1816-F2195**

S S NIAGARA Z29  
MATNEY NIAGARA 1816  
MATNEY PARTY 1608  
S S NIAGARA Z29  
MATNEY NIAGARA 1722  
MATNEY SAFEGUARD 1501

DOB 12/1/21  
Tatt F2195  
Reg. 20400813

CED	11
BW	.5
WW	61
YW	116
M	37

**COW**



**S S NIAGARA Z29**

Consignor: **MATNEY ANGUS FARM**  
A double-bred granddaughter of the very popular Select Sires bull, S S Niagara Z29. Pasture exposed from 4/1/23 until sale day to Connealy Surpass 8671 whose EPDs are +9 +.1 +68 +109 +27 \$B+155 \$C+317. Breeding update sale day.

**24 MATNEY GARY 756X-F2192**

CONNELY GARY  
CONNELY GARY 756X  
JAZZEEN OF CONANGA 4660 756X  
G A R SURE FIRE  
MATNEY SUREFIRE 8144  
MATNEY SHREK 1515

DOB 11/29/21  
Tatt F2192  
Reg. 20400823

CED	10
BW	-.2
WW	77
YW	131
M	25

**COW**

**25 MATNEY GARY F2162**

CONNELY GARY  
CONNELY GARY 756X  
JAZZEEN OF CONANGA 4660 756X  
MATNEY SUNRISE 1673  
MATNEY 1673-1898  
MATNEY SUNRISE 1644

DOB 11/7/21  
Tatt F2162  
Reg. 20368410

CED	6
BW	2.0
WW	69
YW	122
M	26

**COW**

Consignor: **MATNEY ANGUS FARM**  
A daughter of the Matney Angus bull, Connealy Gary 756X out of a dam sired by G A R Sure Fire. Very nice, balanced EPDs on this young female. Pasture exposed from 4/1/23 until sale day to Connealy Surpass 8671 whose EPDs are +9 +.1 +68 +109 +27 \$B+155 \$C+317. Breeding update sale day.

Consignor: **MATNEY ANGUS FARM**  
Another granddaughter of the Connealy Gary bull whose EPDs are +2 +2.1 +84 +155 +18. Very nice, balanced EPDs on this young female. Pasture exposed from 4/1/23 until sale day to Connealy Surpass 8671 whose EPDs are +9 +.1 +68 +109 +27 \$B+155 \$C+317. Breeding update sale day.



**G A R SURE FIRE**

**26 MATNEY GAR SURE FIRE-F2150**

CONNELY IN SURE 8524  
G A R SURE FIRE  
CHAIR ROCK 5050 G A R 8086  
S A V PRIORITY 7283  
MATNEY PRIORITY-1376  
MATNEY 1146

DOB 10/26/21  
Tatt F2150  
Reg. 20401660

CED	1
BW	3.0
WW	58
YW	102
M	33

**COW**

Consignor: **MATNEY ANGUS FARM**  
A daughter of the Select Sires standout, G A R Sure Fire out of a dam sired by the Genex bull, S A V Priority 7283. Another young female from the Matneys. Pasture exposed from 4/1/23 until sale day to Connealy Surpass 8671 whose EPDs are +9 +.1 +68 +109 +27 \$B+155 \$C+317. Breeding update sale day.

**27 MATNEY SUNRISE F2086**

G A R SUNRISE

G A R SUNRISE 2153G

G A R PREDESTINED A057

GAR DAYLIGHT H 3076

MATNEY DAYLIGHT 8155

MATNEY 1312-7601

DOB 11/10/20

Tatt F2086

Reg. 20209659

CED	13
BW	-1.3
WW	56
YW	107
M	26

**COW**



**G A R SUNRISE**

Consignor: **MATNEY ANGUS FARM**

A low birth-weight granddaughter of G A R Sunrise. A young female with balanced EPDs that will make a good cow. Pasture exposed from 4/1/23 until sale day to Connealy Surpass 8671 whose EPDs are +9 +.1 +68 +109 +27 \$B+155 \$C+317. Breeding update sale day.

**28 MATNEY GROWTH FUND F2050**

BASIN PAYWEIGHT 1682

DEER VALLEY GROWTH FUND

DEER VALLEY RITA 36113

G A R SUNRISE 2153G

MATNEY SUNRISE 1887

MATNEY B E 8009

DOB 10/15/20

Tatt F2050

Reg. 20140337

CED	9
BW	2.6
WW	82
YW	144
M	27

**COW**

Consignor: **MATNEY ANGUS FARM**

An own daughter of the very popular Select Sires bull, Deer Valley Growth Fund. Outstanding EPDs on this young cow. Don't miss this one. Pasture exposed from 4/1/23 until sale day to Connealy Surpass 8671. Breeding update sale day.

**29A TE NIAGARA F2275**

S S NIAGARA Z29

MATNEY NIAGARA 7133

MATNEY DAYLIGHT 1551

PA SAFEGUARD 021

MATNEY SAFEGUARD 1526

MATNEY MANDAN-1052

DOB 11/5/22

Tatt F2275

Reg. 20639219

CED	8
BW	-.4
WW	58
YW	105
M	34

**COW**

Consignor: **MATNEY ANGUS FARM/ JET FARM**

A bred heifer from Taylor & Jake Estep. A granddaughter of the Select Sires bull, S S Niagara Z29. Pasture exposed from 4/1/23 until sale day to Connealy Surpass 8671 whose EPDs are +9 +.1 +68 +109 +27 \$B+155 \$C+317. Breeding update sale day.

**29B PRIMROSE FIRE 258**

G A R SURE FIRE

MATNEY SURE FIRE 8152

MATNEY PROFIT 1573

QUAKER HILL OBJECTIVE 3J15

PRIMROSE OBJECTIVE 7158

DMB MISS PRIMROSE 2100

DOB 4/5/22

Tatt 258

Reg. 20678899

CED	7
BW	2.3
WW	56
YW	100
M	30

**COW**

Consignor: **MATNEY ANGUS FARM/ JET FARM**

A granddaughter of G A R Sure Fire out of a female bred into the DMB Angus herd. Pasture exposed from 4/1/23 until sale day to Connealy Surpass 8671. Breeding update sale day.

**30 TE GARY 756X-F2194**

CONNEALY GARY

CONNEALY GARY 756X

JAZZEEN OF CONANGA 4660 756X

DEER VALLEY ALL IN

MATNEY FOREVER ALL IN 8172

MATNEY FOREVER LADY 8011

DOB 12/1/21

Tatt F2194

Reg. 20400824

CED	15
BW	-3.1
WW	61
YW	107
M	42

**COW**

Consignor: **MATNEY ANGUS FARM/ JET FARM**

A daughter of the Connealy Gary 756X bull seeing service in the Matney's family herd. Low birth weight EPDs on this young cow. Pasture exposed from 4/1/23 until sale day to Connealy Surpass 8671 whose EPDs are +9 +.1 +68 +109 +27 \$B+155 \$C+317. Breeding update sale day.



**DEER VALLEY ALL IN**

**33 MATNEY FOREVER ALL IN 8172**

A A R T E N X 7008 S A  
DEER VALLEY ALL IN  
DEER VALLEY RITA 0274  
ALC BIG EYE D09N  
MATNEY FOREVER LADY 8011  
MATNEY TAYLOR 1 I 2 - 0618

DOB 10/13/18  
 Tatt 8172  
 Reg. 19445606

CED	11
BW	-.3
WW	60
YW	107
M	34

**COW**

Consignor: **MATNEY ANGUS FARM/  
 JET FARM**

A daughter of the highly proven Select Sires bull, Deer Valley All In. A proven producer from Taylor & Jake Estep's herd. She was bred to S S Niagara Z29 on 12/4/23 and then pasture exposed after 1/1/24 until sale day to Connealy Unique 020.

**31 TE ASHLAND F2160**

G A R ASHLAND  
CONNEALY ASHLAND 7442  
ENDELLA OF CONANGA 7442  
G A R SURE FIRE  
MATNEY SURE FIRE 1963  
MATNEY DAYLIGHT 1640

DOB 11/7/21  
 Tatt F2160  
 Reg. 20368376

CED	18
BW	-2.9
WW	53
YW	86
M	33

**COW**

Consignor: **MATNEY ANGUS FARM/  
 JET FARM**

A granddaughter of the Genex popular bull, GAR Ashland. Her dam is sired by the Select Sires bull, G A R Sure Fire. Pasture exposed from 4/1/23 until sale day to Connealy Surpass 8671 whose EPDs are +9 +.1 +68 +109 +27 \$B+155 \$C+317. Breeding update sale day.

**32 TE NIAGARA 7133-F0204**

S S NIAGARA Z29  
MATNEY NIAGARA 7133  
MATNEY DAYLIGHT 1551  
G A R SUNRISE 2153G  
MATNEY SUNRISE 1665  
MATNEY PREDESTINED-1059

DOB 12/16/20  
 Tatt F0204  
 Reg. 20154767

CED	3
BW	2.5
WW	66
YW	114
M	14

**COW**

Consignor: **MATNEY ANGUS FARM/  
 JET FARM**

A granddaughter of the S S Niagara Z29 bull. Nice, balanced EPDs on this young female. Pasture exposed from 4/1/23 until sale day to Connealy Surpass 8671 whose EPDs are +9 +.1 +68 +109 +27 \$B+155 \$C+317. Breeding update sale day.

**34 MATNEY COMRADE 1707-1238**

CONNEALY COMRADE 1385  
MATNEY COMRADE 1707  
MATNEY SHREK 1420  
CONNEALY BLACKHAWK 6198  
MATNEY BLACKHAWK 1933  
MATNEY SAFEGUARD 1525

DOB 4/8/21  
 Tatt 1238  
 Reg. 20295303

CED	9
BW	0
WW	58
YW	109
M	29

**COW**

Consignor: **MATNEY ANGUS FARM /  
 JUSTIN MATNEY**

A granddaughter of Blackhawk and Comrade; both popular Select Sires bulls. Nice, balanced EPDs on this young female. Pasture exposed from 4/1/23 until sale day to Connealy Surpass 8671. Breeding update sale day.



**CONNEALY COMRADE 1385**

# 35 NSC WEIGH UP 208 419

PLATTEMERE WEIGH UP K360

MAF 19W98

MAF 13S17

MATNEY SUNRISE 1663

NSC SUNRISE 208

ALH 1231 B3 616

DOB 10/8/21

Tatt 419

Reg. 20474618

CED	13
BW	-1.5
WW	57
YW	92
M	29

## COW

Consignor: **N & S CATTLE CO.**

A MAF Plattermere Weigh Up K360 daughter out of a dam sired by a Matney Sunrise bull. This is a high calving ease, low energy cow with excellent maternal traits ranking in the top 10% of the breed in \$M. Bred AI to Tehama Patriarch F028 (AAA 18981191) on 12/19/2023. Pasture exposed to Ogle Boulder Casino 220 (AAA 19944767) from 12/24/2023 to 2/7/2024. Examined safe with calf 2 months on 3/22/2024.

# 36 NSC WEIGH UP 318

PLATTEMERE WEIGH UP K360

MAF 19W98

MAF 13S17

HHF FINAL ANSWER H57 B3

ALH 1111 B3 622

MWF MISS H9 V56 1111

DOB 10/7/20

Tatt 318

Reg. 19980656

CED	9
BW	-.7
WW	63
YW	107
M	29

## COW

Consignor: **N & S CATTLE CO.**

This is another MAF Plattermere Weigh Up K360 daughter out of a dam sired by a SAV Final Answer Bull. Great calving ease, low energy and a well balanced set of EPDs. Bred AI to Quaker Hill Black Bandolier (AAA 20199493) on 11/27/2023. Pasture exposed to Ogle Boulder Casino 220 (AAA 19944767) from 12/24/2023 to 2/7/2024. Examined safe with calf 4 months on 3/22/2024.



**MGR TREASURE**



**PLATTEMERE WEIGH UP K360**

# 37A NESTER BLACKCAP 427L

TEX PLAYBOOK 5437

BJ SURPASS

BJ PROPHET 5275

WERNER WAR PARTY 2417

MATNEY PARTY 1623

MATNEY BE 1206

DOB 4/27/23

Tatt 427L

Reg. 20646917

CED	10
BW	.4
WW	64
YW	111
M	37

## COW

**DDP**

Consignor: **NESTER ANGUS**

Two nice yearling heifers in this group. This heifer has the look and EPD profile to be a core part of your herd for the next decade. Double digit calving ease to go along with Milk (+37) and \$M (+88) in the top 3% of the breed. Sired by the popular maternal bull, BJ Surpass. Sells open.

# 37B JAF MISS SIMMON 2355

MGR TREASURE

JAF TREASURE 1808

W R F MINA 616

W R F RIGHT ANSWER 412

JAF MISS SIMMON 1604

W R F MISS SIMMON 029

DOB 4/16/23

Tatt 2355

Reg. 20635195

CED	-4
BW	5.2
WW	77
YW	140
M	23

## COW

Consignor: **NESTER ANGUS**

Two nice yearling heifers in this group. The second heifer is a powerhouse. She combines a real feminine look with big time growth numbers. With Weaning Weight (+77) in the top 15% of the breed and Yearling Weight (+140) in the top 10%, she'll provide plenty of pounds. Sells open.

# 38 RAINBOW RITA 341

JINDRA 3RD DIMENSION  
JINDRA ACCLAIM  
JINDRA BLACKBIRD LASSY 1111  
DAMERON C-5 AMERICAN CLASSIC  
RAINBOW RITA 277  
B G S RITA 697

DOB 1/28/22  
 Tatt 341  
 Reg. 20745195

CED	4
BW	1.5
WW	61
YW	118
M	26



## COW

### JINDRA ACCLAIM

Consignor: **RAINBOW ANGUS**  
 This Jindra Acclaim daughter is out of a dam from the Rita cow family. 341 has a heifer calf born 3/13/24 by Woodhill Goldstrike whose EPDs are: +10 +.2 +75 +136 +35 \$B+170 (Top 20%) \$C+295 (Top 15%).

# 39 RIVERS BEND PRINCESS 2023

BASIN PAYWEIGHT 006S  
BASIN PAYWEIGHT 1682  
21AR O LASS 7017  
G A R INGENUITY  
LUCAS LADY INGENUITY 43J  
LUCAS LADY PERFORMER 6370

DOB 9/28/20  
 Tatt 2023  
 Reg. 20253352

CED	11
BW	-1.7
WW	58
YW	104
M	30

## COW

### DDP

Consignor: **RIVERS BEND RANCH**  
 A young proven producer sired by the highly proven Basin Payweight 1682. Her dam was bred in the Lucas herd and comes from the Lucas Lady cow family. Nice, balanced EPDs on this young cow. She was bred on 1/12/24 to Connealy Craftsman whose EPDs are +7 +2.0 +83 +144 +41 \$B+182 \$C+349 (Top 1% of Breed). Pasture exposed from 1/26/24 until 3/15/24 to Rivers Bend Regiment 2251.



### QUAKER HILL RAMPAGE 0A36

# 40 RIVERS BEND MISS ELIA 2025

BYERGO BLACK MAGIC 3348  
BYERGO BOOMER 6351  
BYERGO MISS ELIA 2821  
LEMMON OBJECTIVE 171U  
LEMMON MORRISON Z157  
JARRELL MORRISON 57W

DOB 9/25/20  
 Tatt 2025  
 Reg. 20179038

CED	6
BW	3.5
WW	54
YW	96
M	27

## COW

Consignor: **RIVERS BEND RANCH**  
 Another young cow from Danny Atkins/Rivers Bend Ranch. A daughter of the ABS Global bull Byergo Boomer 6351 out of a cow from the Harvey Lemmon herd. She was bred on 12/14/23 to Connealy Craftsman then pasture exposed from 1/26/24 until 3/15/24 to Rivers Bend Regiment 2251 whose EPDs are +6 +1.8 +76 +135 +25 \$B+183 (Top 15%) \$C+291 (Top 20%).

# 41 RIVERS BEND LADY 5632

MCC DAYBREAK  
QUAKER HILL RAMPAGE 0A36  
QHF BLACKCAP 6E2 OF4V16 4355  
MURCIELAGO MANDATE 1158  
CALVARY'S CORA 563  
CALVARY CORA 63

DOB 9/29/19  
 Tatt 5632  
 Reg. 19857156

CED	6
BW	2.5
WW	77
YW	128
M	21

## COW

Consignor: **RIVERS BEND RANCH**  
 A daughter of Breed Legend, Quaker Hill Rampage 0A36, the ABS Global bull. Outstanding EPDs on this young female including the \$B+168 (Top 15%) and \$C+262 (Top 25%). She was bred on 12/14/23 to Connealy Craftsman whose EPDs are +7 +2.0 +83 +144 +41 \$C+349 (Top 1% of Breed). Pasture exposed 1/26/24 until 3/15/24 to Rivers Bend Regiment 2251, a son of the Select Sires Wilks Regiment 9035.



## SYDGEN MANDATE 6079

## 44 CALVARY'S CORA 563

SYDGEN MANDATE 6079

DOB 3/15/15

MURCIELAGO MANDATE 1158

Tatt 563

MURCIELAGO FOREVER LADY 8240

Reg. 18239528

DESIGNER G 58T 878 4R

CALVARY CORA 63

CALVARY MISSY 50

CED	8
BW	.7
WW	51
YW	91
M	22

## COW

Consignor: **RIVERS BEND RANCH**

A granddaughter of the Origen bull, SydGen Mandate 6079 out of a dam from the Cora cow family. She was bred on 12/14/23 to Connealy Craftsman whose EPDs are +7 +2.0 +83 +144 +41 \$B+182 (Top 10%) \$C+349 (Top 1%). Pasture exposed from 1/26/24 until 3/15/24 to Rivers Bend Regiment 2251, the Wilks Regiment 9035 son from the Select Sires Stud.

## 42 3STRING PRIDE 91233

CONNELY CONSENSUS

DOB 3/12/19

K C F BENNETT FORTRESS

Tatt 91233

THOMAS PATRICIA 9705

Reg. 19761954

LGW BIG EYE 9728

THOMAS PRIDE 33212

PRIDE LGW 8384

CED	1
BW	1.6
WW	66
YW	114
M	26

## COW

DDP

Consignor: **RIVERS BEND RANCH**

A proven producer sired by the popular and proven, K C F Bennett Fortress. Her dam comes from the Thomas Angus Ranch herd in Oregon. She was bred on 12/14/23 to Stellpflug Hoffman RiseAbove whose EPDs are +11 +2.0 +96 +153 +26 \$C+320 (Top 5% of Breed). Pasture exposed from 1/26/24 until 3/15/24 to Rivers Bend Regiment 2251, the Wilks Regiment 9035 son.

## 45 CEDAR SPRINGS ROSETTA 26B

S A V BISMARCK 5682

DOB 9/19/14

S A V BRILLIANCE 8077

Tatt 26B

S A V BLACKCAP MAY 5270

Reg. 18433612

S A V IRON MOUNTAIN 8066

CEDAR SPRINGS ROSALYN 26Z

SKYWAY HILLS PRIDE ROSE 170

CED	8
BW	1.7
WW	61
YW	102
M	26

## COW

Consignor: **RIVERS BEND RANCH**

A proven producer sired by S A V Brilliance 8077 out of a dam from the Skyway Hills Pride Rose cow family. She was bred on 12/14/23 to Stellpflug Hoffman RiseAbove, the Hoffman Stagecoach son. Pasture exposed from 1/26/24 until 3/15/24 to Rivers Bend Regiment 2251 whose EPDs are +6 +1.8 +76 +135 +25 \$B+183 (Top 15%) \$C+291 (Top 20%).

## 43 RIVERS BEND PRECISION R235

S S OBJECTIVE T510 0T26

DOB 12/8/15

LEMMON OBJECTIVE Y40

Tatt R235

JARRELL MISS LADY STAR 73U

Reg. 18473297

G A R NEW DESIGN 5050

LEMMON COQUETTE Z81

JARRELL COQUETTE 30U

CED	8
BW	.5
WW	50
YW	89
M	21

## COW

Consignor: **RIVERS BEND RANCH**

A granddaughter of the Angus Breed Legend, S S Objective T510 0T26 out of a dam from the Lemmon Coquette cow family. She was bred on 12/14/23 to Virginia Tech Statesman whose EPDs are +6 +1.3 +81 +154 +27 \$B+194 (Top 5%) \$C+329 (Top 3%). Pasture exposed from 1/26/24 until 3/15/24 to Rivers Bend Regiment 2251.



## S S OBJECTIVE T510 0T26





## MUSGRAVE 316 STUNNER

**53**

## BF ICONIC 331

MUSGRAVE 316 STUNNER

DOB 3/6/23

DB ICONIC G95

Tatt 331

DB MS DISCOVERY D13

Reg. 20765402

BASIN EXCITEMENT

CED	7
BW	1.0
WW	73
YW	127
M	26

BF EXCITMENT 427

B F NEW DAYS 011

	BW	WW	ADG	YW
Weight	70	760	3.71	1143
Ratio	103	109	98	98

**VQA  
BULL  
M1P**

Consignor: **BULLOCK FARM**

**51**

## BF ICONIC 326

MUSGRAVE 316 STUNNER

DOB 3/9/23

DB ICONIC G95

Tatt 326

DB MS DISCOVERY D13

Reg. 20765403

SITZ IDENTITY 2575

CED	7
BW	.8
WW	64
YW	116
M	22

BF SITZ IDENTITY 731

BF QUEEN UPWARD 206

	BW	WW	ADG	YW
Weight	67	701	4.27	1182
Ratio	99	100	112	102

**VQA  
BULL  
M1P**

Consignor: **BULLOCK FARM**

**54**

## BF ASHLAND 330

G A R EARLY BIRD

DOB 3/5/23

G A R ASHLAND

Tatt 330

CHAIR ROCK AMBUSH 1018

Reg. 20765404

A A R TEN X 7008 S A

CED	9
BW	1.0
WW	67
YW	123
M	22

BF TEN X 804

BF BIG EXCITMENT 610

	BW	WW	ADG	YW
Weight	72	671	3.96	1107
Ratio	106	96	104	95

**VQA  
BULL**

Consignor: **BULLOCK FARM**

**52**

## BF ASHLAND 339

G A R EARLY BIRD

DOB 3/8/23

G A R ASHLAND

Tatt 339

CHAIR ROCK AMBUSH 1018

Reg. 20765405

PA FULL POWER 1208

CED	9
BW	.1
WW	62
YW	109
M	23

BF FULL POWER 727

B F TRAVELERS ALLIANCE 959

	BW	WW	ADG	YW
Weight	68	680	3.80	1157
Ratio	100	97	100	100

**VQA  
BULL**

Consignor: **BULLOCK FARM**



**G A R ASHLAND**



**G A R DAYLIGHT**



**BGA DAYLIGHT 345**

GAR DAYLIGHT H 3076

DOB 3/20/23

MATNEY DAYLIGHT 1918

Tatt 345

MATNEY WAR PARTY 1417

Reg. 20732850

TOKEENAS IDEAL 2J1 1J12

BGA MINA 1502

MH MINA 031

CED	10
BW	2.4
WW	69
YW	126
M	32

	BW	WW	ADG	YW
Weight	87	685	3.41	1115
Ratio	104	97	90	96

**VQA BULL M1P**

Consignor: **BURKES GARDEN ANGUS**



**BF BRICKYARD 335**

S S NIAGARA Z29

DOB 2/19/23

S S BRICKYARD

Tatt 335

LUCY S S C109

Reg. 20765401

G A R ASHLAND

BF ASHLAND 109

BF CONFIDECE PLUS 730

CED	13
BW	-1.4
WW	65
YW	120
M	31

	BW	WW	ADG	YW
Weight	58	704	4.45	1122
Ratio	97	101	117	97

**VQA BULL**

Consignor: **BULLOCK FARM**



**BGA REGIMENT 317**

WAR CAVALRY B063 Z044

DOB 3/10/23

WILKS REGIMENT 9035

Tatt 317

VINTAGE CHLOE 6137

Reg. 20732851

TA PAYWEIGHT 3C35 9J5

BGA EILEE 1743

BGA EILEEN 4012

CED	8
BW	1.7
WW	70
YW	130
M	38

	BW	WW	ADG	YW
Weight	80	685	4.04	1158
Ratio	101	102	106	100

**VQA BULL M1P**

Consignor: **BURKES GARDEN ANGUS**



**BF BRICKYARD 336**

S S NIAGARA Z29

DOB 2/12/23

S S BRICKYARD

Tatt 336

LUCY S S C109

Reg. 20765400

CONNELY RIGHT ANSWER 746

BF RIGHT ANSWER 108

BF BELLES SUBSTANCE 364

CED	11
BW	-1.3
WW	59
YW	112
M	31

	BW	WW	ADG	YW
Weight	56	680	4.02	1181
Ratio	94	97	106	102

**VQA BULL**

Consignor: **BULLOCK FARM**



**S S NIAGARA Z29**



## S A V RENOWN 3439

## 61 GRAGG RENOWN 396G

S A V RENOWN 3439

DOB 3/16/23

GRAGG RENOWN 7138G

Tatt 396G

GRAGG ELSIEMERE 4117

Reg. 20815084

S A V RAINDANCE 6848

GRAGG LADY 9043

GRAGG LADY 6052

CED	6
BW	1.4
WW	72
YW	122
M	26

	BW	WW	ADG	YW
Weight	78	734	3.07	1158
Ratio	91	107	81	100

**VQA  
BULL**

Consignor: **GRAGG FARMS**

## 59 BGA WILKES REGIMENT 313

WAR CAVALRY B063 Z044

DOB 3/8/23

WILKS REGIMENT 9035

Tatt 313

VINTAGE CHLOE 6137

Reg. 20693436

TA PAYWEIGHT 6B11 8H2

CED	11
BW	.7
WW	71
YW	131
M	35

BGA LUCY 820

BGA LUCY 1517

	BW	WW	ADG	YW
Weight	88	706	3.43	1174
Ratio	111	106	90	101

**VQA  
BULL  
MIP**

Consignor: **BURKES GARDEN  
ANGUS**

## 62 GRAGG STUNNER 394G

MUSGRAVE 316 STUNNER

DOB 3/14/23

LAWSONS STUNNER J884

Tatt 394G

LAWSONS CHLOE G522

Reg. 20815083

S A V RAINDANCE 6848

GRAGG ELSIEMERE 9058

GF ELSIEMERE X087

CED	6
BW	1.9
WW	74
YW	125
M	30

	BW	WW	ADG	YW
Weight	80	703	3.93	1233
Ratio	101	111	103	106

**VQA  
BULL**

Consignor: **GRAGG FARMS**

## 60 BGA TEAMWORK 318

E W A PEYTON 642

DOB 2/27/23

E W A TEAMWORK 821

Tatt 318

E W A 543 OF 117 WEIGH UP

Reg. 20693440

G A R SUNRISE 2153G

CED	15
BW	-.9
WW	79
YW	128
M	29

MATNEY SUNRISE 1792

MATNEY 1223

	BW	WW	ADG	YW
Weight	72	708	3.57	1152
Ratio	91	106	94	99

**VQA  
BULL**

Consignor: **BURKES GARDEN  
ANGUS**



## E W A PEYTON 642



**S A V JESSE JAMES 0968**

**65 GRAGG JESSE JAMES 345G**

S A V RENOVATION 6822

DOB 2/17/23

S A V JESSE JAMES 0968

Tatt 345G

S A V BLACKCAP MAY 8961

Reg. 20815080

APEX WINDY 078

GRAGG ELLUNAS ELITE 6034

GF ELLUNAS ELITE 2035

CED	3
BW	3.1
WW	60
YW	99
M	26

	BW	WW	ADG	YW
Weight	88	704	3.46	1134
Ratio	101	103	91	98

**VQA BULL**

Consignor: **GRAGG FARMS**

**63 GRAGG DOC 387G**

COLEMAN DOC 2261

DOB 3/9/23

GRAGG DOC 8119G

Tatt 387G

CALLAWAYS RUBY TIFFANY 1844

Reg. 20815082

GRAGG RESOURCE 767G

GRAGG EVERELDA ENTENSE 0091

GRAGG EVERELDA ENTENSE 7002

CED	-10
BW	6.2
WW	71
YW	124
M	18

	BW	WW	ADG	YW
Weight	98	702	3.96	1256
Ratio	126	111	104	108

**VQA BULL MIP**

Consignor: **GRAGG FARMS**

**66 GRAGG PATHFINDER 308G**

LT ENTERPRISE 5213

DOB 2/9/23

KOUPALS B&B PATHFINDER 8106

Tatt 308G

B&B BLKBD PROGRESS 3015

Reg. 20815077

MUSGRAVE CRACKERJACK

GRAGG ELSIEMERE 1005

GRAGG ELSIEMERE 9020

CED	10
BW	-1.1
WW	73
YW	127
M	29

	BW	WW	ADG	YW
Weight	67	714	3.75	1258
Ratio	94	113	99	108

**VQA BULL**

Consignor: **GRAGG FARMS**

**64 GRAGG DOC 379G**

COLEMAN DOC 2261

DOB 3/7/23

GRAGG DOC 8119G

Tatt 379G

CALLAWAYS RUBY TIFFANY 1844

Reg. 20815081

KMK ALLIANCE 6595 187

GRAGG EVERELDA ENTENSE 0046

GRAGG EVERELDA ENTENSE 7012

CED	3
BW	1.5
WW	67
YW	115
M	21

	BW	WW	ADG	YW
Weight	72	674	3.57	1135
Ratio	94	107	94	98

**VQA BULL MIP**

Consignor: **GRAGG FARMS**



**COLEMAN DOC 2261**

# 67 KAF CALIBER 3310

WOODHILL BLUEPRINT

G V F CALIBER

G V F RUBY 5094

DEER VALLEY TEN X 3014

KAF MISS BURGESS 024

KAF MISS BURGESS 606

DOB 3/20/23

Tatt 3310

Reg. 20747770

CED	8
BW	.9
WW	81
YW	123
M	32

**VQA BULL**



**G V F CALIBER**

	BW	WW	ADG	YW
Weight	64	835	4.20	1340
Ratio	100	100	110	115

Consignor: **KING ANGUS FARM**

# 68 LAWSONS BARRICADE L1275

SITZ STELLAR 726D

SITZ BARRICADE 632F

SITZ BARBARAMERE NELL 765D

DEER VALLEY GROWTH FUND

LAWSONS CHLOE G630

BASIN CHLOE 7T26

DOB 3/17/23

Tatt L1275

Reg. 20701931

CED	1
BW	3.2
WW	96
YW	160
M	19

**VQA BULL**

	BW	WW	ADG	YW
Weight	84	656	4.05	1162
Ratio	100	100	107	100

Consignor: **LAWSON FAMILY FARMS**

# 70 LAWSONS TOP SHELF L1271

T K STUNNER F655B

LAWSONS TOP SHELF J888

LAWSONS CHLOE Z341

COLEMAN ENGAGE 5255

LAWSONS LUCY 1926

44 LUCY 1661

DOB 3/12/23

Tatt L1271

Reg. 20752747

CED	11
BW	.5
WW	85
YW	143
M	32

**VQA BULL**

	BW	WW	ADG	YW
Weight	80	776	3.79	1239
Ratio	98	124	100	107

Consignor: **LAWSON FAMILY FARMS**

# 69 LAWSONS BARRICADE L1268

SITZ STELLAR 726D

SITZ BARRICADE 632F

SITZ BARBARAMERE NELL 765D

DEER VALLEY GROWTH FUND

LAWSONS CHLOE G630

BASIN CHLOE 7T26

DOB 3/14/23

Tatt L1268

Reg. 20701930

CED	2
BW	2.5
WW	88
YW	153
M	26

**VQA BULL**

	BW	WW	ADG	YW
Weight	84	649	3.95	1176
Ratio	100	100	104	101

Consignor: **LAWSON FAMILY FARMS**

# 71 LAWSONS TURBO L1256

STEVENSON TURBO POWER 50010

STEVENSON TURBO POWER 10071

STEVENSON BLACK BEAUTY 9152

T K STUNNER F383

LAWSONS JILT J843

LAWSONS JILT E76

DOB 2/20/23

Tatt L1256

Reg. 20703612

CED	7
BW	1.6
WW	80
YW	143
M	26

**VQA BULL**

	BW	WW	ADG	YW
Weight	79	703	4.43	1234
Ratio	107	104	116	106

Consignor: **LAWSON FAMILY FARMS**



**MUSGRAVE 316 STUNNER**

**74 LAWSONS STUNNER L1234**

MUSGRAVE 316 STUNNER

T K STUNNER F655B

T K PRINCESS Z749

C R A BEXTOR 872 5205 608

YON SARAH X435

YON SARAH N170

DOB 2/8/23

Tatt L1234

Reg. 20701921

CED	4
BW	2.3
WW	78
YW	131
M	29

	BW	WW	ADG	YW
Weight	87	647	4.02	1169
Ratio	106	111	106	101

**VQA BULL**

Consignor: **LAWSON FAMILY FARMS**

**72 LAWSONS BARRICADE L1254**

SITZ STELLAR 726D

SITZ BARRICADE 632F

SITZ BARBARAMERE NELL 765D

DEER VALLEY GROWTH FUND

LAWSONS CHLOE G630

BASIN CHLOE 7T26

DOB 2/19/23

Tatt L1254

Reg. 20701929

CED	2
BW	2.8
WW	92
YW	157
M	27

	BW	WW	ADG	YW
Weight	87	603	4.34	1163
Ratio	100	100	114	100

**VQA BULL**

Consignor: **LAWSON FAMILY FARMS**

**75 LAWSONS STUNNER L1233**

MUSGRAVE 316 STUNNER

T K STUNNER F655B

T K PRINCESS Z749

S A V RENOWN 3439

COLEMAN DONNA 794

COLEMAN DONNA 040

DOB 2/8/23

Tatt L1233

Reg. 20701918

CED	7
BW	1.6
WW	76
YW	125
M	27

	BW	WW	ADG	YW
Weight	86	590	3.77	1102
Ratio	104	102	99	95

**VQA BULL**

Consignor: **LAWSON FAMILY FARMS**

**73 LAWSONS TURBO L1238**

STEVENSON TURBO POWER 50010

STEVENSON TURBO POWER 10071

STEVENSON BLACK BEAUTY 9152

EXAR EQUITY 7435B

LAWSONS HENRIETTA PRIDE H824

LAWSONS HENRIETTA PRIDE E103

DOB 2/10/23

Tatt L1238

Reg. 20703611

CED	11
BW	.8
WW	69
YW	122
M	26

	BW	WW	ADG	YW
Weight	74	681	3.21	1125
Ratio	100	100	85	97

**VQA BULL**

Consignor: **LAWSON FAMILY FARMS**

**76 LAWSONS RESILIENT L1219**

SITZ STELLAR 726D

SITZ RESILIENT 10208

SITZ MISS BURGESS 1856

EXAR EQUITY 7435B

LAWSONS DONNA H820

LAWSONS DONNA E221

DOB 1/22/23

Tatt L1219

Reg. 20701913

CED	8
BW	1.4
WW	81
YW	141
M	29

	BW	WW	ADG	YW
Weight	79	680	4.14	1239
Ratio	102	108	109	107

**VQA BULL**

Consignor: **LAWSON FAMILY FARMS**



**BALDRIDGE ALTERNATIVE E125**

**79**

**LAWSONS ALTERNATIVE L1205**

BALDRIDGE ALTERNATIVE E125

DOB 1/17/23

Tatt L1205

STEVENSON ALTERNATIVE 00081

Reg. 20701911

STEVENSON JOYCE 3825

COLEMAN BRAVO 6313

LAWSONS CHLOE G522

LAWSONS CHLOE C815

CED	10
BW	.7
WW	62
YW	116
M	27

	BW	WW	ADG	YW
Weight	86	654	3.20	1073
Ratio	104	103	84	92

**VQA BULL**

Consignor: **LAWSON FAMILY FARMS**

**77** **LAWSONS RESILIENT L1216**

SITZ STELLAR 726D

DOB 1/21/23

Tatt L1216

SITZ RESILIENT 10208

Reg. 20701915

SITZ MISS BURGESS 1856

LAWSONS RENOWN G546

CED	5
BW	.8
WW	86
YW	142
M	28

LAWSONS CHLOE J841

LAWSONS CHLOE E234

	BW	WW	ADG	YW
Weight	80	611	4.46	1148
Ratio	105	97	117	99

**VQA BULL**

Consignor: **LAWSON FAMILY FARMS**

**80** **LAWSONS RESILIENT L1200**

SITZ STELLAR 726D

DOB 1/15/23

Tatt L1200

SITZ RESILIENT 10208

Reg. 20701908

SITZ MISS BURGESS 1856

DEER VALLEY GROWTH FUND

LAWSONS CHLOE G630

BASIN CHLOE 7T26

CED	1
BW	1.1
WW	93
YW	162
M	31

	BW	WW	ADG	YW
Weight	80	589	3.88	1110
Ratio	100	100	102	96

**VQA BULL**

Consignor: **LAWSON FAMILY FARMS**

**78** **LAWSONS RESILIENT L1207**

SITZ STELLAR 726D

DOB 1/17/23

Tatt L1207

SITZ RESILIENT 10208

Reg. 20701909

SITZ MISS BURGESS 1856

DEER VALLEY GROWTH FUND

LAWSONS CHLOE G630

BASIN CHLOE 7T26

	BW	WW	ADG	YW
Weight	83	593	4.04	1131
Ratio	100	100	106	97

CED	8
BW	.4
WW	84
YW	149
M	28

**VQA BULL**

Consignor: **LAWSON FAMILY FARMS**



**SITZ STELLAR 726D**

# 81 LAWSONS INCENTIVE L1185

SITZ STELLAR 726D  
 SITZ INCENTIVE 704H  
 SITZ BARBARAMERE NELL 53F  
 COLEMAN BRAVO 6313  
 LAWSONS CHLOE G522  
 LAWSONS CHLOE C815

DOB 1/10/23  
 Tatt L1185  
 Reg. 20701906

CED	7
BW	.6
WW	83
YW	141
M	26

	BW	WW	ADG	YW
Weight	87	609	4.45	1092
Ratio	100	100	117	94

**VQA BULL**

Consignor: **LAWSON FAMILY FARMS**



**DEER VALLEY UNIQUE 5635**

# 83 LAWSONS RENOWN L1179

RITO 707 OF IDEAL 3407 7075  
 S A V RENOWN 3439  
 S A V BLACKCAP MAY 4136  
 SITZ UPWARD 307R  
 LAWSONS CHLOE Z341  
 BASIN CHLOE 7T26

DOB 1/7/23  
 Tatt L1179  
 Reg. 20701897

CED	-2
BW	3.1
WW	86
YW	160
M	34

	BW	WW	ADG	YW
Weight	86	617	3.38	1107
Ratio	100	100	89	95

**VQA BULL**

Consignor: **LAWSON FAMILY FARMS**

# 84 MATNEY UNIQUE 020-3228

DEER VALLEY UNIQUE 5635  
 CONNEALY UNIQUE 020  
 ELFA OF CONANGA 020  
 S S NIAGARA Z29  
 MATNEY NIAGARA 7100  
 MATNEY PARTY 1521

DOB 4/9/23  
 Tatt 3228  
 Reg. 20768557

CED	0
BW	2.7
WW	93
YW	164
M	18

	BW	WW	ADG	YW
Weight	76	766	4.23	1360
Ratio	101	104	111	117

**VQA BULL**

Consignor: **MATNEY ANGUS FARM**

# 82 LAWSONS RESILIENT L1184

SITZ STELLAR 726D  
 SITZ RESILIENT 10208  
 SITZ MISS BURGESS 1856  
 S A V RENOWN 3439  
 LAWSONS CHLOE D907  
 LAWSONS CHLOE Z341

DOB 1/9/23  
 Tatt L1184  
 Reg. 20703614

CED	3
BW	1.4
WW	95
YW	166
M	26

	BW	WW	ADG	YW
Weight	78	542	3.89	1111
Ratio	100	100	102	96

**VQA BULL**

Consignor: **LAWSON FAMILY FARMS**

# 85 MATNEY PAYRAISE839M-2398

CONNEALY PAYRAISE  
 CONNEALY PAYRAISE 839M  
 BREEVA OF CONANGA 839M  
 G A R SURE FIRE  
 MATNEY SURE FIRE 1955  
 MATNEY DAYLIGHT 1661

DOB 3/21/23  
 Tatt 2398  
 Reg. 20762331

CED	6
BW	2.5
WW	84
YW	154
M	33

	BW	WW	ADG	YW
Weight	77	825	4.04	1276
Ratio	107	123	106	110

**VQA BULL**

Consignor: **MATNEY ANGUS FARM**



**86 MATNEY PAYRAISE839M-2392**

CONNEALY PAYRAISE  
CONNEALY PAYRAISE 839M  
BREEVA OF CONANGA 839M  
S S NIAGARA Z29  
MATNEY NIAGARA 1954  
MATNEY PARTY 1612

DOB 3/18/23  
 Tatt 2392  
 Reg. 20762327

CED	3
BW	2.5
WW	80
YW	144
M	38

	BW	WW	ADG	YW
Weight	75	796	5.02	1493
Ratio	104	119	132	129

**VQA BULL**

Consignor: **MATNEY ANGUS FARM**



**CONNEALY PAYRAISE**

**87 MATNEY PAYRAISE839M-2387**

CONNEALY PAYRAISE  
CONNEALY PAYRAISE 839M  
BREEVA OF CONANGA 839M  
S S NIAGARA Z29  
MATNEY NIAGARA 1977  
MATNEY PARTY 1623

DOB 3/17/23  
 Tatt 2387  
 Reg. 20762329

CED	7
BW	.9
WW	81
YW	138
M	34

	BW	WW	ADG	YW
Weight	72	767	3.77	1260
Ratio	100	115	99	109

**VQA BULL**

Consignor: **MATNEY ANGUS FARM**

**88 JET ASHLAND 2368**

G A R ASHLAND  
CONNEALY ASHLAND 7442

DOB 3/11/23  
 Tatt 2368  
 Reg. 20860547

ENDELLA OF CONANGA 7442  
JINDRA ACCLAIM  
TE SURE ACCLAIM 2032  
MATNEY SURE FIRE 1850

CED	4
BW	2.0
WW	77
YW	141
M	27

	BW	WW	ADG	YW
Weight	73	819	4.55	1402
Ratio	103	108	120	121

**VQA BULL**

Consignor: **MATNEY ANGUS FARM/  
 JET FARM**



**TEHAMA TAHOE B767**

**89 MATNEY TAHOE 836N-2364**

TEHAMA TAHOE B767  
CONNEALY TAHOE 836N  
BOKA RANA OF CONANGA 836N  
MATNEY COMRADE 1707  
MATNEY COMRADE 1707-F2071  
MATNEY BLACKHAWK 8142

DOB 3/8/23  
 Tatt 2364  
 Reg. 20671796

CED	15
BW	-1.9
WW	75
YW	132
M	39

	BW	WW	ADG	YW
Weight	75	769	4.45	1325
Ratio	112	115	117	114

**VQA BULL**

Consignor: **MATNEY ANGUS FARM**

**90 MATNEY EMERALD 2359**

CONNEALY CONFIDENCE PLUS

DOB 3/4/23

Tatt 2359

Reg. 20672905

CONNEALY EMERALD

JACE OF CONANGA 6571

G A R SURE FIRE

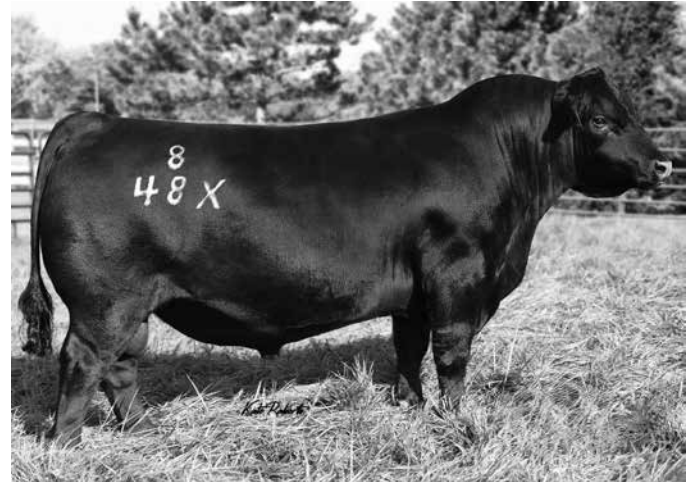
MATNEY SURE FIRE 0207

MATNEY NIAGARA 1724

CED	13
BW	-2.0
WW	76
YW	140
M	25

	BW	WW	ADG	YW
Weight	67	677	3.82	1211
Ratio	96	101	100	104

**VQA BULL**



**CONNEALY EMERALD**

Consignor: **MATNEY ANGUS FARM**

**91 MATNEY IRON HORSE 025F-2356**

EXAR STALLION 7986

DOB 3/2/23

Tatt 2356

Reg. 20672917

BIGK/WSC IRON HORSE 025F

EXAR HENRIETTA PRIDE 5702

CONNEALY BLACKHAWK 6198

MATNEY BLACKHAWK 2035

MATNEY SUNRISE 7105

CED	11
BW	1.4
WW	76
YW	134
M	28

	BW	WW	ADG	YW
Weight	72	677	3.79	1189
Ratio	103	101	100	102

**VQA BULL**

Consignor: **MATNEY ANGUS FARM/  
JUSTIN MATNEY**

**92 MATNEY GUARANTEE 9137-2351**

CONNEALY PAYRAISE

DOB 2/28/23

Tatt 2351

Reg. 20672919

CRAWFORD GUARANTEE 9137

CRAWFORD MS ARMORY D40

MATNEY TOUR DUTY 6104

MATNEY 6104-8185

MATNEY SUNRISE 1552

CED	7
BW	1.1
WW	77
YW	141
M	30

	BW	WW	ADG	YW
Weight	70	742	4.36	1310
Ratio	97	111	115	113

**VQA BULL**

Consignor: **MATNEY ANGUS FARM**



**WOODHILL BLUEPRINT**

**93 JET BLUEPRINT 2350**

CONNEALY CONFIDENCE PLUS

DOB 2/28/23

Tatt 2350

Reg. 20901530

WOODHILL BLUEPRINT

WOODHILL EVERGREEN Z291-B233

MATNEY COMRADE 1729A

MATNEY COMRADE 9193

MATNEY 1301-7601

CED	10
BW	-2
WW	54
YW	95
M	32

	BW	WW	ADG	YW
Weight	68	703		
Ratio	96	92		

**VQA BULL  
DDP**

Consignor: **MATNEY ANGUS FARM/  
JET FARM**



**S S NIAGARA Z29**

**96 MATNEY NIAGARA Z29-2331**

HOOVER DAM

DOB 2/22/23

S S NIAGARA Z29

Tatt 2331

JET S S X144

Reg. 20672881

CONNEALY BLACKHAWK 6198

MATNEY BLACKHAWK 2036

MATNEY PARTY 1703

CED	9
BW	.9
WW	60
YW	115
M	38

	BW	WW	ADG	YW
Weight	69	764	4.98	1406
Ratio	101	115	131	121

**VQA BULL**

Consignor: **MATNEY ANGUS FARM**

**94 MATNEY GUARANTEE 9137-2344**

CONNEALY PAYRAISE

DOB 2/26/23

CRAWFORD GUARANTEE 9137

Tatt 2344

CRAWFORD MS ARMORY D40

Reg. 20672908

G A R SUNRISE 2153G

MATNEY SUNRISE 2063

MATNEY 1229

CED	7
BW	1.9
WW	70
YW	127
M	38

	BW	WW	ADG	YW
Weight	69	714	3.43	1158
Ratio	99	107	90	100

**VQA BULL**

Consignor: **MATNEY ANGUS FARM**

**97 MATNEY TEHAMA TAHOE 2320**

TEHAMA UPWARD Y238

DOB 2/20/23

TEHAMA TAHOE B767

Tatt 2320

TEHAMA MARY BLACKBIRD Y684

Reg. 20673018

S S NIAGARA Z29

MATNEY NIAGARA 1972

MATNEY PARTY 1608

CED	11
BW	-1.3
WW	64
YW	112
M	37

	BW	WW	ADG	YW
Weight	68	685	3.32	1147
Ratio	97	103	87	99

**VQA BULL**

Consignor: **MATNEY ANGUS FARM**

**95 MATNEY CONNEALY GARY 2334**

CONNEALY GARY

DOB 2/23/23

CONNEALY GARY 756X

Tatt 2334

JAZZEEN OF CONANGA 4660 756X

Reg. 20671779

S S NIAGARA Z29

MATNEY NIAGARA 1733

MATNEY WAR PARTY 1417

CED	4
BW	2.5
WW	83
YW	148
M	28

	BW	WW	ADG	YW
Weight	75	733	4.13	1275
Ratio	106	110	108	110

**VQA BULL**

Consignor: **MATNEY ANGUS FARM**

**98 JET ROSEVERA TAHOE 2319**

TEHAMA UPWARD Y238

DOB 2/19/23

TEHAMA TAHOE B767

Tatt 2319

TEHAMA MARY BLACKBIRD Y684

Reg. 20861146

MATNEY NIAGARA 7133

TEROSEVERA/NIAGARA 7133-2157

MATNEY ROSEVERA 1588

CED	5
BW	1.8
WW	76
YW	133
M	38

	BW	WW	ADG	YW
Weight	75	821	4.34	1244
Ratio	111	100	114	107

**VQA BULL**

Consignor: **MATNEY ANGUS FARM/  
JET FARM**

**99** **MINTON MANNING 2390**

QUAKER HILL MANNING 4EX9

DOB 3/28/23

LUCAS MANNING 8110

Tatt 2390

LUCAS LADY PROPHET 350S

Reg. 20717372

BARSTOW BANKROLL B73

CED	4
BW	2.0
WW	73
YW	123
M	26

LUCAS LADY BANK ROLL 887S

LUCAS LADY TOUR OF DUTY 5980

	BW	WW	ADG	YW
Weight	68	723	4.23	1312
Ratio	96	105	111	113

**VQA  
BULL  
M1P**



**QUAKER HILL MANNING 4EX9**

Consignor: **MINTON FARM**

**100** **MINTON MANNING 2336**

QUAKER HILL MANNING 4EX9

DOB 3/3/23

LUCAS MANNING 8110

Tatt 2336

LUCAS LADY PROPHET 350S

Reg. 20717371

K C F BENNETT COMMONWEALTH

CED	5
BW	2.1
WW	92
YW	153
M	29

LUCAS LADY COMMONWEALTH 7120

LUCAS LADY ALL IN 5920

	BW	WW	ADG	YW
Weight	70	705	4.36	1253
Ratio	97	103	115	108

**VQA  
BULL  
M1P**

**101** **MINTON GROWTH FUND 2331**

BASIN PAYWEIGHT 1682

DOB 2/9/23

DEER VALLEY GROWTH FUND

Tatt 2331

DEER VALLEY RITA 36113

Reg. 20717368

LUCAS SOUTHWEST 7130

CED	7
BW	1.5
WW	88
YW	169
M	35

LUCAS LADY SOUTHWEST 13F

LUCAS LADY REMEDY 87J

	BW	WW	ADG	YW
Weight	71	732	4.20	1296
Ratio	110	107	110	112

**VQA  
BULL  
M1P**

Consignor: **MINTON FARM**

Consignor: **MINTON FARM**



**EXAR STALLION 7986**

**102** **MINTON IRON HORSE 2323**

EXAR STALLION 7986

DOB 1/31/23

BIGK/WSC IRON HORSE 025F

Tatt 2323

EXAR HENRIETTA PRIDE 5702

Reg. 20717362

S A V BRUISER 9164

LUCAS LADY BRUISER T811J

VPI BLACKBIRD 8U3

CED	8
BW	1.9
WW	93
YW	162
M	25

	BW	WW	ADG	YW
Weight	68	694	3.84	1307
Ratio	94	101	101	113

**VQA  
BULL  
M1P**

Consignor: **MINTON FARM**

# 103 MINTON HOME TOWN 2322

G A R ASHLAND

G A R HOME TOWN

CHAIR ROCK SURE FIRE 6095

LUCAS BAREBACK 778S

MINTON LADY BAREBACK 210M

LUCAS LADY EPIC T879S

DOB 1/31/23

Tatt 2322

Reg. 20717361

CED	8
BW	1.5
WW	88
YW	150
M	27

**VQA BULL**

	BW	WW	ADG	YW
Weight	66	709	3.61	1196
Ratio	101	103	95	103

Consignor: **MINTON FARM**



**G A R Home TOWN**

# 104 MINTON IRON HORSE 2320

EXAR STALLION 7986

BIGK/WSC IRON HORSE 025F

EXAR HENRIETTA PRIDE 5702

G A R HOME TOWN

MINTON HOMETOWN 270M

LUCAS LADY BRUISER T811J

DOB 1/31/23

Tatt 2320

Reg. 20717360

CED	7
BW	1.8
WW	84
YW	147
M	22

**VQA BULL**  
M1P

	BW	WW	ADG	YW
Weight	67	634	4.29	1205
Ratio	104	92	113	104

Consignor: **MINTON FARM**

# 105 NSC PLAYBOOK L15

BASIN PAYWEIGHT 1682

TEX PLAYBOOK 5437

RITA 1C43 OF 9M26 COMPLETE

MATNEY SUNRISE 1663

NSC SUNRISE 209

ALH 1113 B3 625

DOB 3/6/23

Tatt L15

Reg. 20773198

CED	11
BW	1.1
WW	64
YW	108
M	30

**VQA BULL**

	BW	WW	ADG	YW
Weight	74	643	3.89	1089
Ratio	104	102	102	94

Consignor: **N & S CATTLE COMPANY**



**BASIN PAYWEIGHT 1682**

# 106 NSC PLAYBOOK L14

BASIN PAYWEIGHT 1682

TEX PLAYBOOK 5437

RITA 1C43 OF 9M26 COMPLETE

G A R METHOD

NSC METHOD 204

HHH EXT V7 EVERELDA 699 H8

DOB 3/6/23

Tatt L14

Reg. 20775761

CED	9
BW	1.9
WW	79
YW	135
M	34

**VQA BULL**

	BW	WW	ADG	YW
Weight	84	657	4.23	1081
Ratio	118	104	111	93

Consignor: **N & S CATTLE COMPANY**



**V A R Discovery 2240**

**109 B G S DISCOVERY 954**

V A R DISCOVERY 2240

DOB 1/19/23

B G S DISCOVERY 874

Tatt 954

B G S BLACKCAP 738

Reg. 20777128

BOYD FORWARD 6025

B G S BLACKCAP 678

CED	4
BW	1.4
WW	62
YW	115
M	30

B G S BLACKCAP 613

	BW	WW	ADG	YW
Weight	80	712	4.80	1209
Ratio	104	98	126	104

**VQA BULL**

Consignor: **RAINBOW ANGUS**

**107 NSC GROWTH FUND L11**

BASIN PAYWEIGHT 1682

DOB 3/4/23

DEER VALLEY GROWTH FUND

Tatt L11

DEER VALLEY RITA 36113

Reg. 20773200

HHF REAL WORLD J1

CED	8
BW	.3
WW	77
YW	139
M	33

NSC REAL WORLD LADY 147 188

HHF REMEDY LADY 413 147

	BW	WW	ADG	YW
Weight	55	619	4.36	1159
Ratio	88	98	115	100

**VQA BULL**

Consignor: **N & S CATTLE COMPANY**

**110 RAINBOW DISCOVERY 1041**

V A R DISCOVERY 2240

DOB 1/15/23

B G S DISCOVERY 874

Tatt 1041

B G S BLACKCAP 738

Reg. 20905360

PVF INSIGHT 0129

RAINBOW RITA 294

RAINBOW RITA 259

CED	0
BW	2.6
WW	65
YW	121
M	24

	BW	WW	ADG	YW
Weight	83	737	3.14	1062
Ratio	106	102	83	92

**VQA BULL**

Consignor: **RAINBOW ANGUS**

**108 NSC GROWTH FUND L9**

BASIN PAYWEIGHT 1682

DOB 3/4/23

DEER VALLEY GROWTH FUND

Tatt L9

DEER VALLEY RITA 36113

Reg. 20773197

SCH CONSENSUS 1029

CED	7
BW	2.0
WW	75
YW	134
M	34

HC BLACKCAP 1713108644B

HCHENRIETTA 13108644B

	BW	WW	ADG	YW
Weight	73	657	4.11	1153
Ratio	101	104	108	109

**VQA BULL**

Consignor: **N & S CATTLE COMPANY**



**DEER VALLEY GROWTH FUND**

# BERKSHIRE HATHAWAY

HomeServices



**Smith Reasor**  
Realtor®

**Mountain Sky Properties**  
Serving Southwest Virginia  
and the New River Valley  
Cell: (276) 620-3123  
Office: (276) 228-8882  
smithreasorsell@gmail.com  
www.swvarealty.com

Member of the franchise system of BHH Affiliates, LLC



*Your visit  
is always  
welcome!*

## Anderson & Son's

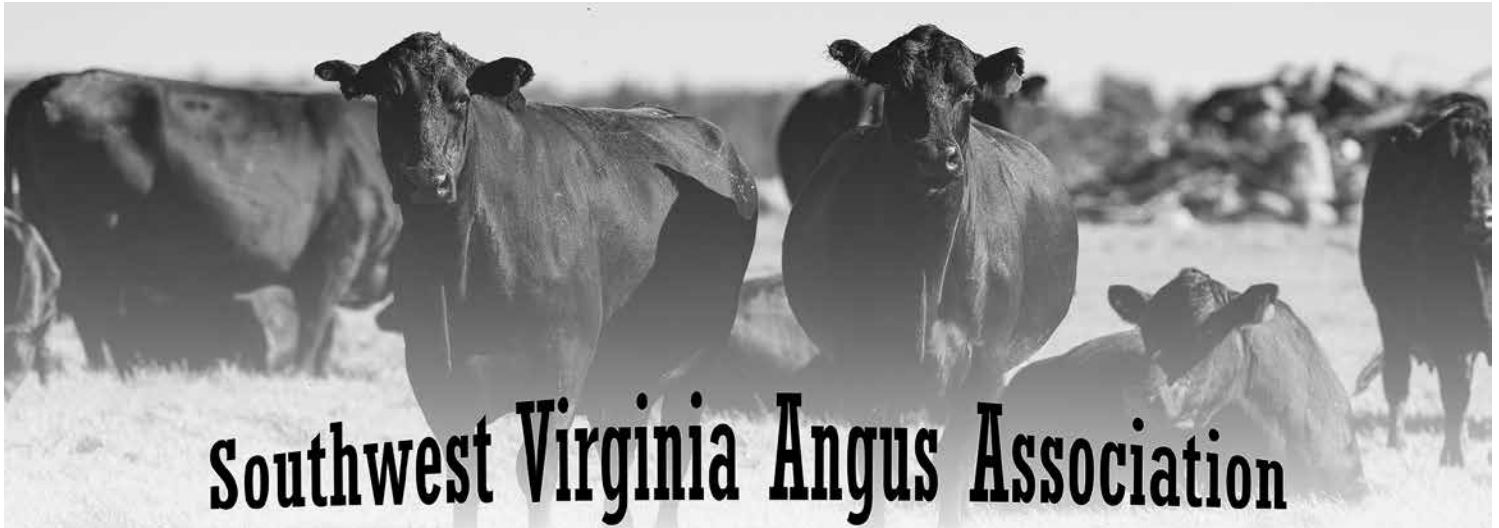
### Meat Processing

- USDA Inspected
- Beef
- Lamb
- Pork
- Deer (24/7 drop-off available)

We are a family owned and operated processing facility conveniently located 3 miles from downtown Abingdon, VA. We are here to serve the Tri-state area for generations to come.

As we set out on this journey, providing quality in every cut along with customer satisfaction being our number one goal.

**276-623-3623**  
13200 Chip Ridge Road, Abingdon, VA  
[andersonandsonsmeat.com](http://andersonandsonsmeat.com)



## Southwest Virginia Angus Association



**Annual Sales in  
April, October, & December**

Visit our Website:  
[www.swvaangus.org](http://www.swvaangus.org)

# The ultimate farm tool is ready to be yours.



M Series 57.9-141.4 Gross HP Wide range of attachments



Kubota tractors are rated #1 for durability and owner experience in the U.S. as awarded by Progressive Farmer.\* Stop in for a demo\*\* and claim this great offer on a range of M Series tractor models including the Kubota M5.

## 20% DOWN 0% APR UP TO 60 MONTHS

VISIT US TODAY FOR THIS LIMITED-TIME OFFER



LAWSON BUILDING SUPPLY,  
INC. 111 ENTERPRISE DR  
ROSE HILL, VA 24281 276-445-  
5411 [www.lawsonskubota.com](http://www.lawsonskubota.com)

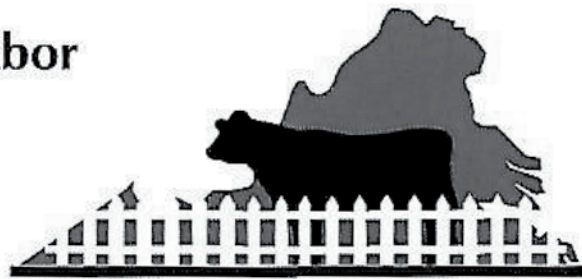
[KubotaUSA.com](http://KubotaUSA.com)

\*Award based on 2021 Progressive Farmer Reader Insights Tractor Study. \*\*Subject to availability. © Kubota Tractor Corporation, 2023. 0% Down, 0% A.P.R. financing for up to 48 months of new M5, M6 and M6s Series equipment and \$0 Down, 0% A.P.R. financing for up to 48 months on purchases of new M5, M60, M4 from participating dealers' in-stock inventory is available to qualified purchasers through Kubota Credit Corporation, U.S.A.; subject to credit approval. Example: 48 monthly payments of \$20.83 per \$1,000 financed. Offers expire 12/31/23. Terms subject to change. This material is for descriptive purposes only. Kubota disclaims all representations and warranties, express or implied, or any liability from the use of this material. For complete warranty, disclaimer, safety, incentive offer and product information, consult your Dealer or [KubotaUSA.com](http://KubotaUSA.com).

**Progressive  
FARMER**  
READER INSIGHTS



Tommy Tabor



**VIRGINIA FENCE  
BUILDERS, INC.**

Fence Contractor

540-616-6181 (cell)  
540-674-6181 (office)  
540-674-1500 (fax)

**CATTLE PENS**

Home Repair  
Barns Built  
Paint

6623 Aaron Lane  
Dublin, VA 24084  
tt43111@hotmail.com

# 2024 EXTRA BULL INFORMATION

LOT	FS	M	S	TS	SC	Rib Fat	Rump Fat	RE	IM	\$W	\$B	\$C
51	5.2	3	3	14	36.0	.41	.46	12.8	4.61	+52	159	271
52	6.5	3	3	14	36.5	.29	.39	15.1	5.38	+54	128	239
53	5.5	3	3	14	38.0	.50	.46	12.4	5.40	+63	152	266
54	5.4	3	3	15	39.0	.29	.35	13.6	5.30	+53	135	244
55	5.5	3	3	14	36.0	.25	.27	12.5	3.98	+63	122	240
56	5.2	3	3	15	37.0	.40	.34	12.3	5.41	+58	127	237
57	6.4	3	3	14	37.0	.29	.32	13.0	3.73	+66	+126	229
58	6.3	3	3	15	42.5	.25	.25	12.2	3.61	+74	+169	281
59	6.0	3	3	15	38.5	.25	.39	13.5	4.01	+74	+140	253
60	5.9	3	3	14	38.5	.43	.36	13.8	5.77	+86	+175	312
61	5.6	3	3	15	35.0	.24	.28	13.9	3.76	+64	+98	201
62	5.2	3	3	15	38.5	.37	.39	13.3	2.96	+70	+117	206
63	6.5	3	3	14	40.0	.28	.28	14.9	3.43	+38	+103	190
64	5.5	3	3	15	37.0	.34	.37	14.9	2.62	+55	+98	194
65	5.7	3	3	14	37.0	.36	.43	11.7	3.89	+53	+104	198
66	6.4	3	3	15	37.5	.31	.40	14.3	3.89	+69	+119	231
67	6.1	3	3	15	39.0	.34	.39	13.7	6.71			
68	6.3	3	3	15	38.0	.28	.25	13.5	3.49	+73	+169	286
69	6.1	3	3	15	39.0	.40	.47	13.2	4.69	+73	+171	284
70	6.0	3	3	15	31.5	.40	.45	14.0	4.54	+87	+160	280
71	5.8	3	3	15	39.5	.29	.23	16.1	4.55	+76	+163	289
72	6.3	3	3	14	38.0	.35	.35	11.9	3.14	+80	+156	277
73	5.2	3	3	15	38.0	.24	.25	15.4	3.24	+69	+137	248
74	5.9	3	3	15	34.0	.27	.45	13.4	3.64	+76	+153	255
75	6.4	3	3	16	41.0	.40	.51	13.5	4.32	+78	+90	197
76	5.9	3	2	14	37.5	.25	.26	13.3	3.41	+79	+127	238
77	6.2	3	3	15	39.0	.27	.35	13.5	4.71	+89	+132	261
78	6.4	3	3	14	39.5	.24	.32	12.5	3.26	+79	+171	296
79	5.4	3	3	15	38.0	.22	.24	14.7	2.47	+63	+107	219
80	6.6	3	3	14	40.0	.20	.29	10.9	3.75	+87	+177	296
81	5.3	3	3	15	37.0	.22	.34	13.9	2.97	+82	+123	252
82	5.8	3	3	14	35.5	.29	.42	13.1	3.48	+86	+114	217
83	5.3	3	2	14	37.0	.29	.32	12.3	3.12	+78	+119	213
84	6.7	3	3	16	31.0	.44	.39	15.6	4.89	+69	+189	299
85	6.7	3	3	14	36.5	.30	.37	13.9	4.16	+76	+165	263
86	6.6	3	3	15	34.0	.58	.52	15.5	6.19	+81	+171	289
87	6.1	3	3	14	35.0	.35	.34	13.4	3.27	+88	+130	263
88	7.3	3	3	16	36.5	.39	.53	13.5	6.87	+66	+186	285
89	6.7	3	3	14	39.0	.40	.43	13.2	5.97	+84	+138	246
90	5.9	3	3	15	39.0	.25	.33	14.2	5.73	+74	+186	313
91	6.2	3	3	15	37.0	.25	.31	14.4	2.42	+73	+142	236
92	6.1	3	3	15	38.5	.40	.33	13.8	4.44	+77	+145	268
93	5.4	3	3	14	41.0	.37	.45	13.7	4.83	+59	+136	234
94	5.4	3	3	15	34.5	.34	.56	14.1	4.15	+78	+151	275
95	5.8	3	2	14	40.0	.31	.53	13.5	4.95	+73	+183	275
96	6.3	3	3	15	40.0	.48	.32	15.4	4.79	+68	+136	264
97	5.8	3	3	15	36.5	.43	.37	12.8	4.52	+76	+148	264
98	6.3	3	3	15	39.0	.36	.42	14.1	4.03	+82	+147	261
99	6.3	3	3	15	37.5	.46	.39	15.5	4.34	+71	+146	254
100	7.4	3	3	14	33.0	.37	.32	13.9	4.61	+89	+182	326
101	6.7	3	3	15	39.5	.24	.33	14.0	3.41	+78	+184	277
102	6.0	3	3	14	38.0	.31	.29	14.2	5.81	+82	+188	321
103	6.5	3	3	14	33.5	.36	.31	13.5	7.05	+87	+206	343
104	5.5	3	3	15	36.5	.22	.25	13.9	4.50	+71	+179	291
105	5.7	3	3	14	35.0	.23	.33	12.7	4.01	+69	+121	254
106	6.0	3	3	14	34.0	.21	.27	13.1	3.92	+79	+171	283
107	5.4	3	3	14	35.0	.33	.34	13.4	3.87	+81	+153	265
108	5.4	3	3	14	39.0	.31	.25	11.8	4.43	+70	+148	249
109	6.9	3	3	15	40.0	.31	.28	12.5	4.03	+58	+143	239
110	7.4	3	3	14	39.0	.11	.12	10.3	3.51	+51	+151	235



*Join us for our*

# **Southwest Virginia Angus Association 2024 Sales**

**Southwest Virginia's Double Header Sale  
Saturday, April 20, 2024**

**51st Annual "More for your Money" Angus Sale  
October 12, 2024**

**Southwest Virginia's Finest Angus Sale  
December 7, 2024**

*Visit our Website: [www.swvaangus.org](http://www.swvaangus.org)*